



Lockside House, Chelsea Creek
Fulham SW6

GARTON JONES.COM



Lockside House, Chelsea Creek Fulham, SW6

GARTON JONES.COM

13 Park Street
Chelsea Creek
London
SW6 2FS

Sales +44 (0) 20 7824 7090
paul@gartonjones.com
www.gartonjones.com

£675 Per Week

One-Bedroom Apartment with Private Terrace — Chelsea Creek, Fulham

A stylish one-bedroom apartment of approximately 550 sq ft (51 sq m) to rent in Lockside House, part of the highly sought-after Chelsea Creek development. The apartment features a bright open-plan reception room with access to a private terrace, alongside a smart kitchen with breakfast bar and Siemens integrated appliances, including a wine cooler, induction hob, dishwasher, oven, and fridge-freezer.

The bedroom includes fitted wardrobes, and a large utility cupboard houses a washer-dryer. Additional features include wood flooring, comfort cooling, and underfloor heating.

Residents enjoy 24-hour concierge service and access to the spa and fitness suite with indoor swimming pool. The development is conveniently located, with King's Road and Chelsea Harbour nearby, and Imperial Wharf Station just a few minutes' walk.

A fantastic opportunity to rent a modern, riverside home in one of West London's most desirable locations.

** Please note the furniture may differ or not be included to that shown in current photos**

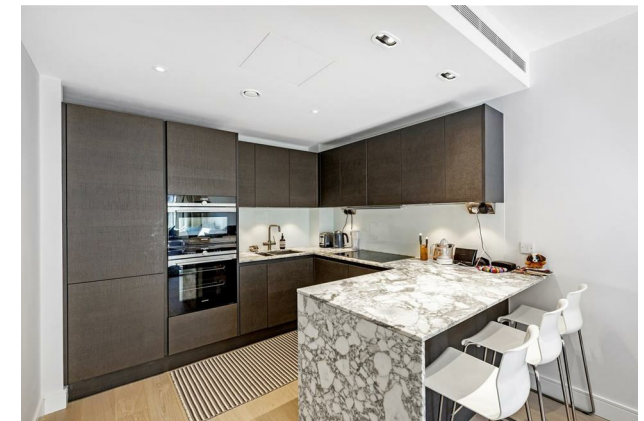
12-Month Tenancy

5-Week Security Deposit

Council Tax — London Borough Of Hammersmith & Fulham
Council Tax — Band E

EPC Rating B (81)

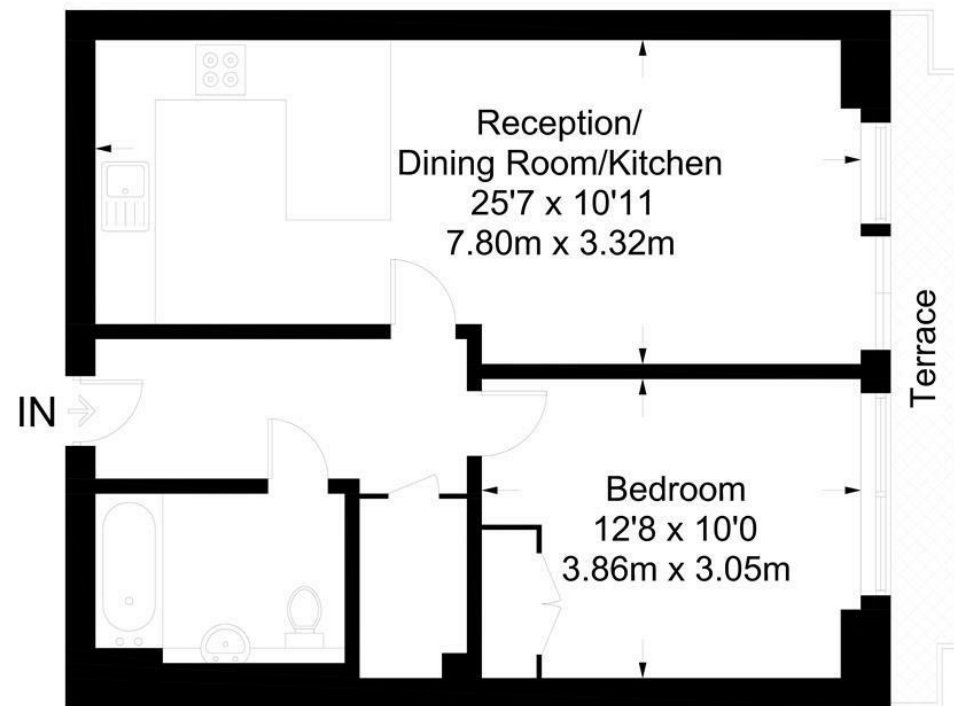
- One Double Bedroom
- 550sqft (51sqm)
- Open Plan Reception Room
- Private Terrace
- Integrated Appliances
- 24 Hour Concierge
- Onsite Spa & Fitness Suite
- Desirable Dockside Development
- Close to Imperial Wharf Overground Station



EPC certificate available on request.

Lockside House

Approximate Gross Internal Area = 550 sq ft / 51 sq m



Ground Floor

Not to scale, for guidance only and must not be relied upon as a statement of fact.
All measurements and areas are approximate only and have been prepared in
accordance with the current edition of the RICS Code of Measuring Practice.

